

Discover the R-Series Slide-In Truck Mount -  
ROBUSTLY engineered,  
RADICALLY innovative & ready to  
REVOLUTIONIZE your SURFACE  
CLEANING and RESTORATION  
experience

Engineered from decades of real-  
world experience with every detail  
tailored to meet the demands of  
professionals

Crafted for durability and  
performance, the R-Series Slide-In  
showcases premium stainless  
steel construction through out its  
frame, brackets, supports, heat  
exchanger and pressure regulator  
- delivering long-lasting reliability  
in every component



## MACHINE SPECIFICATIONS

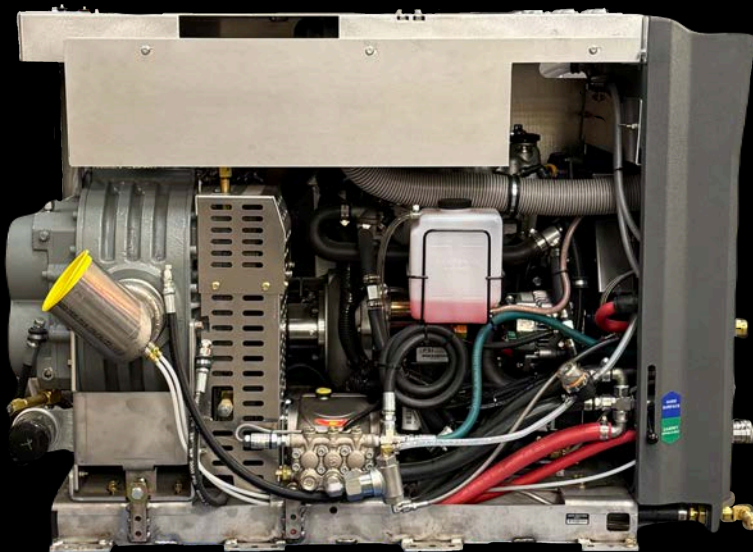
**Dimensions:**  
34"W x 48"D x 34"T

**Robust Build:**  
Stainless Steel Components

**Weight:**  
~950 LBS

**Radical Concepts:**  
LED Digital Display

**Revolutionary Design:**  
CHDS  
(Cabin Heat Discharge System)



## FEATURES

- Featuring an innovative single-side service design, this machine offers quick and easy access to the blower, engine and solution pump oil drains, along with a remotely located engine oil filter
- Commonality of Parts. Zero Hassle. - Blower belt, pump belt, frames - all the same across the board. Simplified service. Maximum uptime.
- Built to Bear the Load. Every Engine. Every Time. - Heavy-duty external bearing supports on all models - because your machine shouldn't flinch when the pressure is on.



**ROBUST  
DESIGN  
BACKED BY  
EXPERIENCE**

**TIME TESTED  
CUSTOMER  
APPROVED**

**REDEFINING  
TRUCK MOUNT  
POWER**

**TRUSTED BY  
THE PROS,  
PERFECTED  
BY  
AERO TECH**

**SPECIFICATIONS**

**CONSOLE**

COMPONENT	R45AIR	R56LIQUID
ENGINE	KOHLER ECH749 EFI, 2 CYL AIR COOLED	PSI 1.0L EFI, 4 CYL LIQUID COOLED
CALIFORNIA COMPLIANT BEARING HOUSING EXTERNAL, GREASEABLE	YES	
THROTTLE	ELECTRONIC	
CHOKER		
BLOWER	MD PNEUMATICS 4005	MD PNEUMATICS 5006
AIR FLOW, CFM	300+	500+
BLOWER FILTER	EXTERNAL	
WASTE TANK PRE-FILTER		
PUMP	GENERAL PUMP PEHT2010S (STAINLESS STEEL)	
WORKING PSI	1,200	
GPM	4.0	
STAINLESS STEEL COMPONENTS	FRAME, BRACKETS, SUPPORTS, HEAT EXCHANGER, PRESSURE REG	
DIGITAL DISPLAY INTERFACE		
POWER DISTRIBUTION MODULE		
THROUGH FLOOR EXHAUST	YES	
BATTERY BOX		
1-1/2" VACUUM HOSE	2 - 10 FT	
2" VACUUM HOSE	150 FT	
1/4" SOLUTION HOSE C/W SHUT OFF VALVE	150 FT	
FRESH WATER TANKS		
TANK	MATERIAL	DIMENSIONS
6 GALLON	ROTO-MOLD POLYETHYLENE	22"W x 8"D x 11"T
45 GALLON (SINGLE OR DUAL OPTION)		39"W x 14"D x 20"T
110 GALLON		55"W x 17"D x 36"T
WASTE TANKS		
TANK	MATERIAL	DIMENSIONS
130 GALLON	STAINLESS STEEL	47"W x 16"D x 44"T 55"W x 16"D x 44"T WITH WATER BOX TRAY
100 GALLON	ROTO-MOLD POLYETHYLENE	58"W x 16"D x 43"T WITH WATER BOX TRAY

**COMPONENT BREAKDOWN**



**PSI 1.0L  
EFI, 4 CYL**

- 38 HP
- CARB/EPA Compliant (50 States)
- Liquid-Cooled
- High Power Density with Fuel Efficiency



**MD Pneumatics  
5006 Blower**

- Tri Lobe
- Helical Gears
- 500 + CFM
- Dual Wand Compatible



**General Pump  
PEHT2010S Pump**

- Stainless Steel
- 4.0 GPM
- 1,200 PSI
- Last Step Chemical Piston Injection Pump



**LED  
Digital Display**

- IP67 Rating
- Simplified Operation
- Service Reminders
- EFI Trouble Shooting
- System Updates
- And More...

