



# SERIES

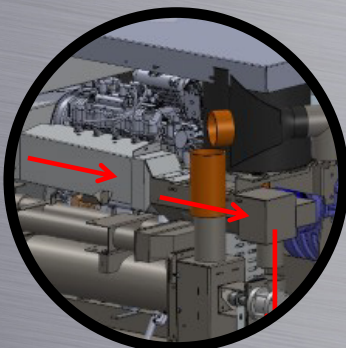
SURFACE CLEANING TRUCK MOUNTS

# Powered by INNOVATION

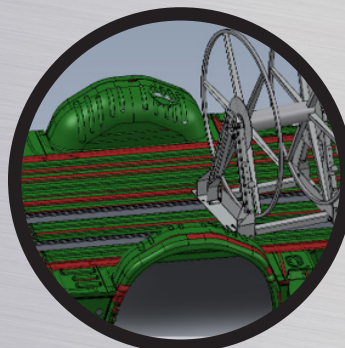
Robust | Radical | Revolutionary

## R-SERIES SLIDE-IN TRUCK MOUNT

Designed for professionals who demand **more**:  
more **durability**, more **control**, more **uptime**.



SERVICE REMINDERS				
111 ENG HRS	INTERVAL	NEXT	REMAINING	
ENGINE OIL & FILTER	150	244	133	
ENGINE VALVES	1000	400	289	
R HEAD BOLTS TORQUE	400	400	289	
BEARING HOUSING	400	400	289	
PRESSURE REGULATOR	400	400	289	
FUEL FILTER	1000	1000	889	
↓ ↑ RESET				



AERO  
TECH

[aerotechmfg.com](http://aerotechmfg.com) | 866-390-2376

# ROBUST • RADICAL

## Better Temp Control Plus Fewer Components

The R-Series requires no demand pump. The R56 does not circulate hot water back to the water tank, which means no dumping of solution water!

This also simplifies the water system, allowing you to achieve more precise temperature controls.

Plus, this unique design removes a common failure point in competing models. Fewer parts means fewer problems.

## Made from Corrosion-Resistant Stainless Steel

The R-Series features key components made from corrosion-resistant stainless steel for years of dependable operation. No rust. No flaky coatings. No peeling paint.

- Engine/Blower Exhaust Heat Exchanger
- Engine Coolant Heat Exchanger
- Main Frame
- Structure & Main Brackets
- Airpath
- Solution Path

## Solid Construction with Less Vibration

Vibration causes stress on equipment which leads to damage and downtime.

The unique ladder-frame design of the R-Series coupled with the single-piece slot-and-tab base ensures a rock-solid installation for less vibration and strain on the machine.

Enjoy enhanced comfort plus fewer belt replacements and breakdowns.

## Cooler Van. Happier Tech. Cabin Heat Discharge System (CHDS)

An industry exclusive! The R-Series vents the exhaust and ambient air through the van floor, not back at the machine or operator.

This keeps the machine cooler and the operator more comfortable.

## Waste Tanks that WOW!

The R-Series features high-capacity waste tank options that feature beveled bottoms for full drainage. Hair, dirt, and debris slides off the sides and out the bottom.

No puddles. No sludge. No stink.

Available in two sizes: 100 gallon rotomold or 130 gallon stainless steel

## Notice What's Missing? The Noise.

Noisy truck mounts that disturb the neighborhood and hurt your ears are a thing of the past.

The R-Series boasts a unique built-in silencer that allows for dramatically quieter operation that your team, your customers, and the neighbors will appreciate.

## Built for Power and Performance in a Variety of Applications

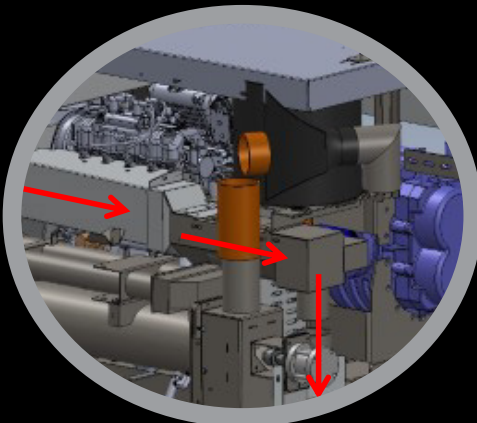
The R-Series is available in two models, both with a similar footprint and customization options for tanks, shelving, and hose reels.

**Choose the R45 Air** for residential and light commercial cleaning.

**Choose the R56 Liquid** for commercial cleaning jobs where more power is needed for dual wand-operation or longer hose runs. Both units are ideal for use on extraction-only restoration job sites.

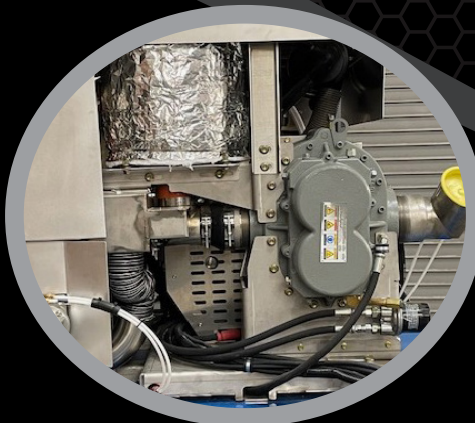


# • REVOLUTIONARY



## **Cabin Heat Discharge System**

Enjoy noticeably cooler interior vehicle temperatures. This keeps the operator comfortable and reduces machine stress.



## **Built-in Silencer**

The unique built-in silencer dramatically reduces machine noise, plus protects sensitive parts from heat exposure.



## **Beveled Waste Tank Bottoms**

Leftover residue, sand, and debris can lead to corrosion and odors. Beveled bottoms ensure complete drainage.

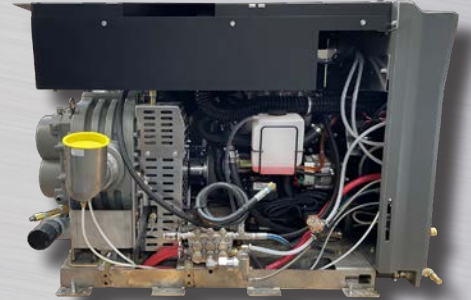


# The Easiest Maintenance You'll Ever Experience!

All machines need maintenance to ensure peak performance. The R-Series was engineered to make routine service as easy as possible to keep your downtime to a bare minimum.

## Single-Side Service

The single-side maintenance design allows you to access serviceable components—no crawling, no reaching, no frustration. The remote engine oil filter allows for easy access, too!



## Easy-Access External Components

Tired of wrestling with your truck mount to perform basic service? Key serviceable components of the R-Series are located on the exterior of the unit—no need to unscrew covers and dig into the machine.

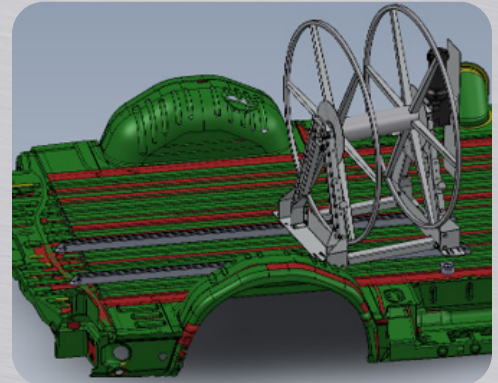
- External greaseable pressure regulator
- External bearing housing
- Vacuum Pre-Filter
- External Waste Tank Blower Filter



## Sliding Hose Reels that Redefine Simplicity

An industry first and Aero Tech exclusive! The sliding rail system lets you easily move hose reels out of the way for clear service access. No unbolting. No complications.

Whether you're doing DIY maintenance or taking it to your preferred mechanic, downtime is dramatically reduced.



## Belts that Resist Stretching and Can Almost Stop Bullets!

The R-Series is built tough, right down to the belts. This unit utilizes banded belts made from EPDM rubber and Aramid fiber (the same family as Kevlar®)! The unique design and durable construction resists stretching and lasts longer so you can enjoy fewer replacements and more uptime!



# Finally! Modern Technology for the Modern Professional

The R-Series features a smart LED interface that makes it easy for the user to operate the unit and quickly see important data in real time.

## User-Friendly Design

No analog gauges. No clutter. Just one on/off switch and a clean, intuitive digital screen.

## Built-in Service Reminders

Tracks hours, intervals, and notifies you when service is due. Never miss an oil change again.

## Real-Time Engine Diagnostics

Displays EFI engine error codes without a scanner. Easy troubleshooting for non-techs.

## Precise Temperature Control

The only machine with user-controlled shutdown of both engine coolant and blower heat for ultra-precise temp adjustment. Whether you're powering through a large commercial job or tackling sensitive upholstery fabrics, you can dial in the temperature you need.

## Durable Design

Designed for rugged markets, the LED display meets the highest standard for dust/water protection—up to IPK67—for military-grade durability.





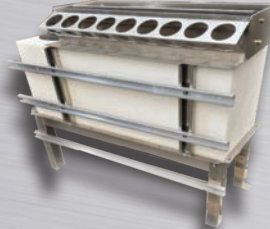
# Tanks & Accessories

*Flexible Configurations Built for the Way You Work*

## Water Tanks with Built-In Storage



**6-Gallon Water Tank**



**45-Gallon**  
Rotomolded Water Tank with  
Built-in Chemical Bins  
*Single or Dual Options*



**110-Gallon**  
Rotomolded Water Tank with  
Built-In Chemical Bins

## Waste Tanks with Smooth Sides and Coned Bottoms



**100-Gallon Waste Tank**  
Rotomolded Polyethylene  
84-Gallons at Shutoff



**130-Gallon Waste Tank**  
Rotomolded Polyethylene  
110-Gallons at Shutoff

## Accessories Designed for Professionals



**Vacuum Hose Reel**  
**Aluminum**  
250-ft Capacity  
Floor or Roof Mount  
Sliding Rail System



**Solution Hose Reel**  
**Aluminum**  
250-ft Capacity  
Floor or Roof Mount  
Sliding Rail System



**Mix & Match Shelving Options**  
Shelves, Brackets, Block Holders,  
Sprayer Holders, and More!

*\*Talk to your Aero Tech representative for help customizing the best storage options for your vehicle.*

# Specifications

	R56 Liquid	R45 Air
<b>Ideal For</b>	<ul style="list-style-type: none"> <li>• Residential or Commercial Carpet Cleaning</li> <li>• Dual-wands or longer hose runs</li> <li>• Extraction-only/restoration</li> </ul>	<ul style="list-style-type: none"> <li>• Residential or Commercial Carpet Cleaning</li> <li>• Extraction-only/restoration</li> </ul>
<b>Engine</b>	PSI 1.0 L GM, 4 Cylinder Liquid-Cooled, EFI Engine	Kohler ECH749, EFI, 26.5 HP 2 Cylinder, Air Cooled, EFI Engine
<b>California Compliant</b>	Yes - CARB/EPA Compliant in all 50 States	
<b>Blower</b>	5006 Tuthill Tri Lobe Blower	4005 Tuthill Tri Lobe Blower
<b>Airflow</b>	500+ CFM	300+ CFM
<b>Pump</b>	General PEHT2010S Stainless Steel Pump 1,500 Working PSI; 4.0 GPM; Last Step Chemical Injection	
<b>Coolant Heat Exchanger</b>	Stainless Steel Tube & Shell	NA
<b>Throttle &amp; Choke</b>	Electronic	
<b>Engine/Blower Exhaust Heat Exchanger</b>	Corrosion-Resistant Stainless Steel	
<b>Frame</b>		
<b>Structure and Main Brackets</b>		
<b>Airpath</b>		
<b>Solution Path</b>		
<b>Heat Shields &amp; Covers</b>	Aluminum	
<b>Digital Display</b>	Yes - LED with Service Alerts	
<b>Power Distribution Module (PDM)</b>	Yes	
<b>Pressure Regulator</b>	External, Greaseable	
<b>Vacuum Pre-Filter</b>	Yes, External	
<b>Engine Bearing Housing</b>	1-7/16" Shaft, External Greaseable	
<b>Remote Engine Oil Filter &amp; Drain</b>	Yes	
<b>Waste Tank Blower Filter</b>	External	
<b>Battery Box</b>	Yes	
<b>Cabin Heat Discharge System</b>	Yes - Through Floor Exhaust	
<b>Weight</b>	950 lbs	775 lbs
<b>Dimensions</b>	34" W x 48" D x 34" H	34" W x 43" D x 34" H

*\*For more information, please contact your Aero Tech representative.*

# Ready to Redefine What a Truck Mount Can Do?

The R-Series Slide-In isn't just another machine—it's a better way to work.

From restoration to residential and commercial cleaning, contractors count on the R-Series to deliver consistent results, day after day.

Backed by Aero Tech's legacy of innovation and customer support.

- Made in the USA
- Engineered for Performance
- Backed by Real-World Testing



Powered by  
**INNOVATION**

Robust | Radical | Revolutionary



[aerotechmfg.com](http://aerotechmfg.com) | 866-390-2376